

What can SINOVALER Provide?

1. All SINOVALER balers are CE certified (CE certificate is attached below), which guarantees the operators' safety.



AV TECHNOLOGY

EUROPEAN COMMUNITY – CERTIFICATE OF ADEQUACY

CERTIFICATE NUMBER GB/1067/1566/09 Issue 1

Manufacturer: Sinospect Industrial Co., Ltd, Nantong, Jiangsu Province, P.R. China

Certificate Holder: Sinospect Industrial Co., Ltd, 327-330, Shiji Guangchang, No 14 Hualou Street, Ningbo 315010, P.R. China

Technical Reference/Date: SS-090122/22nd January 2009

Machine Type: Hydraulic Baler

Trade Name: SINOVALER

Models: SVB2, SVBB2, SVBT2, SVBS2, SHBA2, SHB1, SVBB2-500, SVBT2-400, SVB2-400 & SHBA2-400

Applicable EC Directives: MS Directive 98/37/EC
LV Directive 2006/95/EC

Applicable Standards: MD: EN 12100-1, EN 12100-2 & EN 1050
LVD: EN 60204-1

Based on our review we can confirm that the technical file for the above mentioned product meets the requirements of the relevant EC Directives.

The manufacturer is responsible for certifying the product and ensuring that all manufactured products are in compliance with the specifications detailed in the construction file.

Certificate Issued: 6th February 2009

Place: Stockport, United Kingdom

Signature: 



Notified Body 1067



AV Technology Ltd, AVTech House, Birdhall Lane, Cheadle Heath, Stockport, Cheshire, SK3 0XX, United Kingdom www.avtechnology.co.uk

Form Rev Jan 2009

2. For any of SINOVALER baler, an inspection report by a third party is available (segment of a report by Bureau Veritas for a SINOVALER baler is attached below).



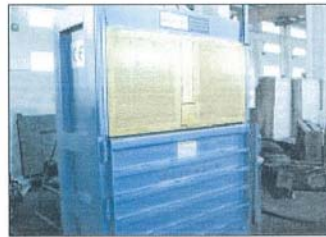
BV Ref: INT-0453-10

Page 1 of 10

Commodity : cardboard baler machine
Supplier : SINOPECT INDUSTRIAL COMPANY LIMITED
Inspection Location : Nantong ,Jiangsu Province
Inspection Date : May 20,2010
Quantity : Two units
Scope of work : Check the specifications according to the PFI and technical specifications
 Function test of the machine with test of compressing of used corrugated cardboards
 Photos

Inspection Result

Storage : At time of our attendance, we found all of the cardboard baler machines were store in both warehouses of manufacturer.



Marking and labeling :





BUREAU
VERITAS

BV Ref: INT-0453-10

Page 10 of 10


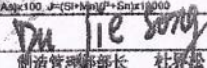


Conclusion : We now certify that the above inspection has been carried out according to Bureau Veritas General conditions and above findings comply with the quality standard required by the buyer. The issuance of this inspection report does not release the contractual parties from their own responsibilities and the fulfillment of their obligations.

Starry Liu
Bureau Veritas China



3. SINOVALER uses top brand steel – Baosteel, to build the structure of balers (Baosteel qualification certificate is attached below)

 宝山钢铁股份有限公司 BAOSHAN IRON & STEEL CO., LTD.		产品质量证明书 INSPECTION CERTIFICATE		上海市宝山区北蕰川路777号 邮编 200949 No.777 NORTH Wenchuan ROAD,BAOSHAN DISTRICT 200949 SHANGHAI, P.R.CHINA TEL (021)26098094 FAX (021)66875089																											
制造厂: 中厚板分公司 Manufacturer: MEDIUM AND HEAVY PLATE BRANCH		产品名称 PRODUCT: 厚板		客户订单编号 CUSTOMER ORDER NO: 证书号 CERTIFICATE NO: BGLJ0880710075700																											
订货单位 CUSTOMER: 上海东帝实业有限公司		收货单位 PURCHASER: 上海东帝实业有限公司		签发日期 DATE OF ISSUE: 2008/07/10																											
规格 SPECIFICATION: GB/T 3274 Q345C		许可证书号 LICENSE NO.		合同号 CONTRACT NO: J8ND065565																											
序 号 NO	钢 板 号 PLATE NO.	炉 号 HEAT NO.	规格及重量 MATERIAL DESCRIPTION				化学成分 CHEMICAL COMPOSITION %						拉伸试验 TENSILE TEST					冲击试验 IMPACT TEST			厚度方向性能 THICKNESS DIRECTION PROPERTY			备 注 REMARKS							
			厚度 THICK	宽度 WIDTH	长度 LENGTH	数 量 QTY	重量 MASS (kg)	C	Si	Mn	P	S	TOTAL	屈服 Y.S.	抗拉 Y.S.	伸长 EL	RA	冲击功 IMPACT ENERGY J	1	2	3	AVE									
							$1 \times 10 \quad 2 \times 100 \quad 3 \times 1000 \quad 4 \times 10000$ 5×100000																								
1	L8027065100	L802463	30.00	2450	9500	1	5483	L	16	33	138	12	4	30			TC	355	594	52	64	TL	0	165	164	159	174				NR
2	L8027086400	L802463	30.00	2450	9500	1	5483	L	16	33	138	12	4	30			TC	355	594	52	64	TL	0	165	164	159	174				NR
备注 U.T. 弯面 $d=$ BEND TEST			外观尺寸 ACCEPTABLE VISUAL AND DIMENSIONS																												
合计 Total: 2			PIECE(S): 10962				KG																								
备注 REMARKS:			*1-化学成分分析(ALE ANALYSIS) P-化学成分分析(PRODUCT ANALYSIS) *2-轧制位置及取向: B-底部(BOTTOM) T-顶部(TOP) C-侧面(SIDE) L-纵向(LONG) E-端面(THROUGH-THICK) *3-重量公差(GROSS WEIGHT) 矩形板(RECTANGULAR L1-5(SORTS), L2-50MM, L4-200MM (5"), L5-41.50RT(5), L6-70MM 圆厚试板片(ROUND) L7-50MM (2") L8-50 *4-屈服比(RATIO) *5-面积减少率(REDUCTION OF AREA) *6-试样厚度(SAMPLE THICKNESS) *7-贯穿厚度特征(THROUGH-THICKNESS CHARACTERISTIC) *8-交货状态(Delivery condition of supply: N-正火(NORMALIZED), O-退火(ANNHEAL), T-正火带微渗, A-正火带微渗, CR-热轧带微渗, TM-TMCT AM-带孔板(ASSEMBLED) X=[10P+5S)+(S+As)100 J=(S+Mn)(P+S)1000 C%:																												
会签 SURVEYOR TO:			本产品已按上述要求进行制造和检验,其结果符合要求,特此证明。 WE HEREBY CERTIFY THAT MATERIAL DESCRIBED HEREIN HAS MANUFACTURED AND TESTED WITH SATISFACTORY RESULTS IN ACCORDANCE WITH THE REQUIREMENTS OF THE ABOVE MATERIAL SPECIFICATION.																		 制造管理部部长 杜界松 MANAGER OF MANUF. MANAGEMENT DEP.										

4. SINOBALER uses top brand electrical and hydraulic components. Below are the component suppliers that we are working with.

Electric Components

SIEMENS



Schneider
Electric

CHINT 正泰®

Hydraulic Components



YUKEN



Hallite
Fenner Advanced Sealing Technologies

NOK

5. SINOBALER pays visits to overseas customers from time to time providing consultation, installation, training and maintenance services.





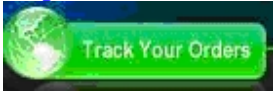
6. SINOBALER will reply you within 24hours for any of your sales inquiry or technical consultation.



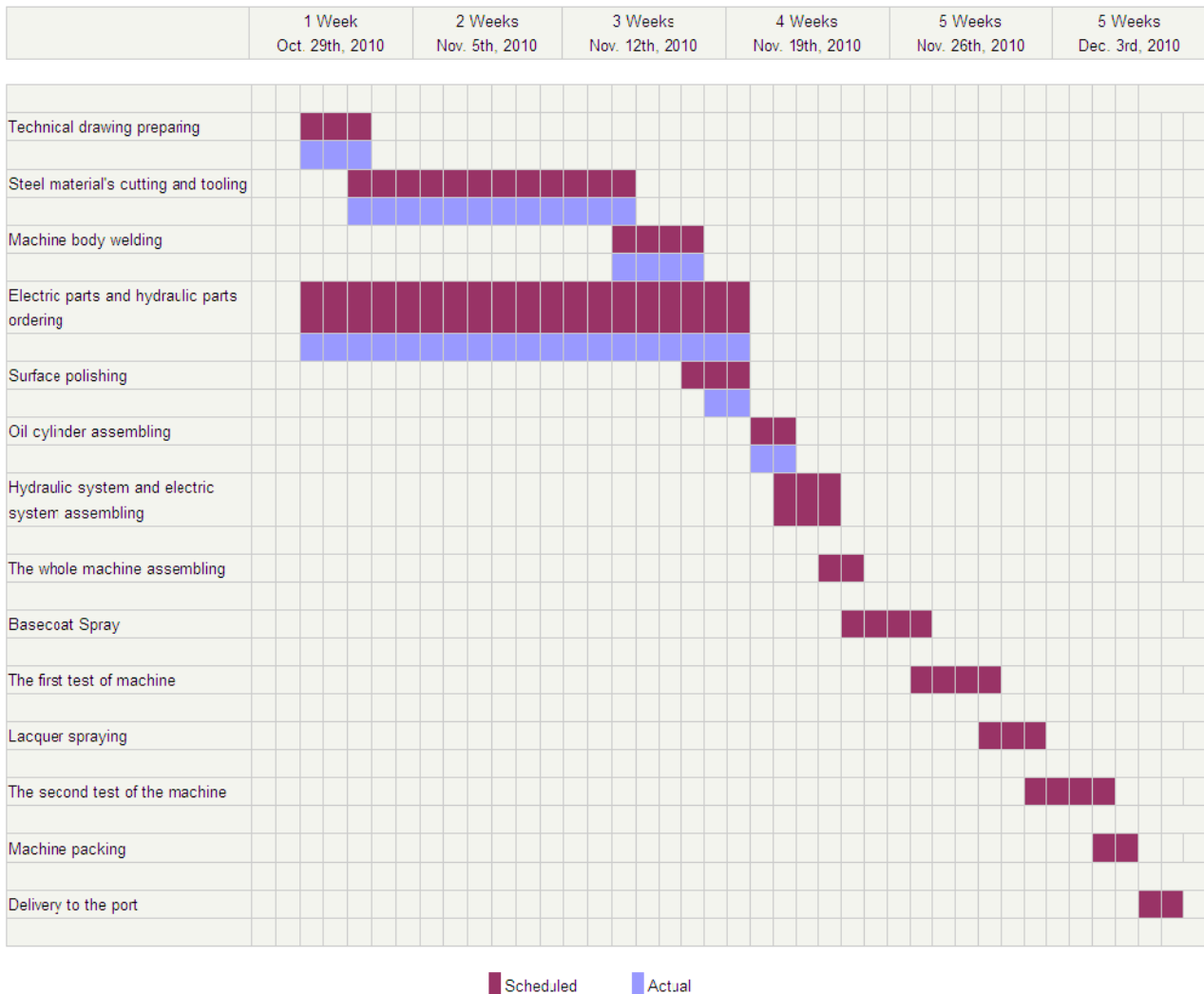
7. Online Order Tracking is available by accessing SINOVALER ERP database. You can view your order status by following below steps:

Step 1: Login our website www.sinobaler.com

Step 2: Click below icon 'Track Your Orders' on the right top corner of the home page



Step 3: Input **Username: XXXX** and **Password: XXXX** to login SINOVALER ERP system. Click “**In Production**” and you will see the **Production Status Sheet** as below:



8. SINOVALER packs the balers with a combination of plastic film, steel structure and plywood case so as to well protect the machines during loading, transportation and discharging process. It complies with the regulation of International Standards Organization's Technical Committee 122 (as called International Packaging Standards). Below are some comparison pictures between SINOVALER's packaging and some other baler suppliers' packaging.

Some Other Baler Supplier's Packaging (plywood case only)



SINOVALER's Packaging (steel-framed plywood case)



9. SINOBALER provides documentation in professional English while some other Chinese suppliers' documentations are filled with confusing expressions. Documentations in your native language are also available as long as you require.
Below are two segments for your reference, one is from some other supplier's user's manual and the other is from SINOBALER's manual.

User's Manual of Some Other Supplier

Note: black line below is cover-up of the supplier's name

[REDACTED]

液 压 打 包 机
Hydraulic Baler Machine

使
用
说
明
书

Instruction

(B)操作安全守则 SAFETY RULES OF OPERATION

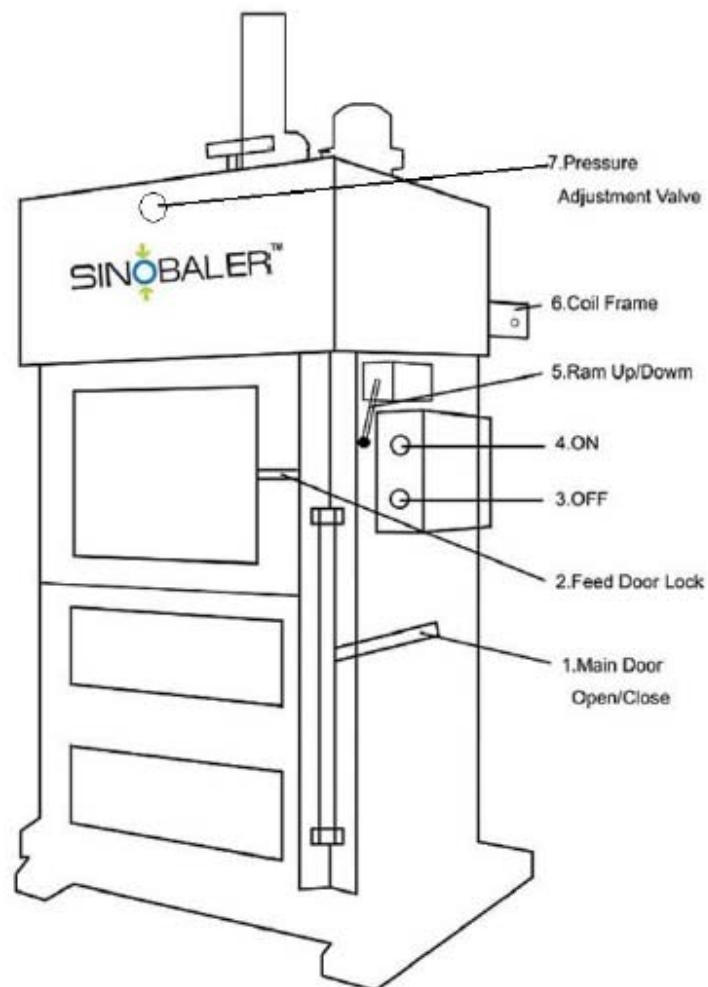
- 1.机械安装场所必须选择地面平坦，基础坚固，排水及通风良好且有安全遮蔽雨之建筑覆盖之场所。
Mechanical installation site must select the flat ground, solid foundation, good ventilation and drainage and a safe construction of rain shelter sites covered.
- 2.机械操作人员务请熟练本操作说明书，并彻底了解本机各部位之功能及其作动方式，以免发生不必要的意外。
Skilled machine operators who are requested to the operating instructions, and a thorough understanding of the function of each part of the machine and its action mode in order to avoid unnecessary accidents.
- 3.机械电源应确实做好接地工程。
Mechanical power engineering should be really good grounding
- 4.操作时操作人员请穿上适当的工作服及手套，以避免被铁线意外刮伤。
Operation, the operator, please wear appropriate clothing and gloves to avoid accidentally scratching the wire
- 5.请指定固定操作人员，非熟练操作操作人员可能肇致机器损害或人员伤害。
Please specify the fixed operators, operators of non-skilled operator may result in machine damage or personal injury
- 6.机械启动前务请注意机械内部有无人员，与操作无关人员请远离工作现场。
Please note mechanical machinery before starting the internal availability of staff, has nothing to do with the operation staff, please stay away from work site
- 7.欲进行机械支维修或保养时，务请关闭电源。
For repair or maintenance of mechanical support when requested to turn off the power
- 8.操作或维修保养时请使用适当之工具，使用后请收拾妥当，勿置放于机械动线范围。
Operation or maintenance, please use the appropriate tools to clean up properly after use, do not be put on the scope of mechanical moving lines.
- 9.机械上所设计安装之保护盖请勿任意取下，以免机器动作时发生危险。
Design and installation of machinery on the cover, do not remove any action to avoid dangerous machines
- 10.每日操作前请注意检查各限位开关，接近开关及电眼是否功能正常。
Please note that check every day before the operation of the limit switches, proximity switches and electric eyes are functioning properly
- 11.几台启动后，绝对禁止徒手伸入绞线机内拨弄铁线，以免发生意外。
After several starts, stretching from the absolute prohibition of bare wire stranding machine fiddle to avoid accidents

User's Manual of SINOBALER



SINOBALER
Single Ram Baler (SVB2-S-200C6040)
Operator Instruction Manual





4. Safety

4.1 General Safety

1. Turn off the machine when not in use.
2. Each time before use, inspect the machine carefully.
3. Users must be trained prior to being assigned as an operator.
4. Never allow children near the operation area, especially when the machine is operating.

4.2 Safety Checklist

1. Every operator should study this manual carefully before operation and be aware of the possible damages which may be caused by improper operation and/or carelessness.
2. Always disconnect all power sources before carrying out any maintenance to your machine.
3. If an oil leak is suspected before use, **DO NOT OPERATE!** Notify SINOBALER immediately.
4. This Baler is only designed to bale materials as defined in Section 2 'Use of Machine'.
5. **DO NOT** use this Baler to process other materials such as hard and hazardous materials, metal, glass, gas or pressurized containers etc.
6. Ensure the machine is positioned on a solid level surface with proper fixings for stability (screws/bolts/weld or similar).
7. If the baler needs to be moved from one location to another, use suitable forklift or travel crane to lift the machine.
8. Check all safety devices before use. Never operate the machine without having all guards in place and sensors functioning.
9. Press STOP button whenever you think there may be an emergency or any sign of improper operation.
10. **DO NOT** stand in front of machine when the door is opened and the bale is being ejected.